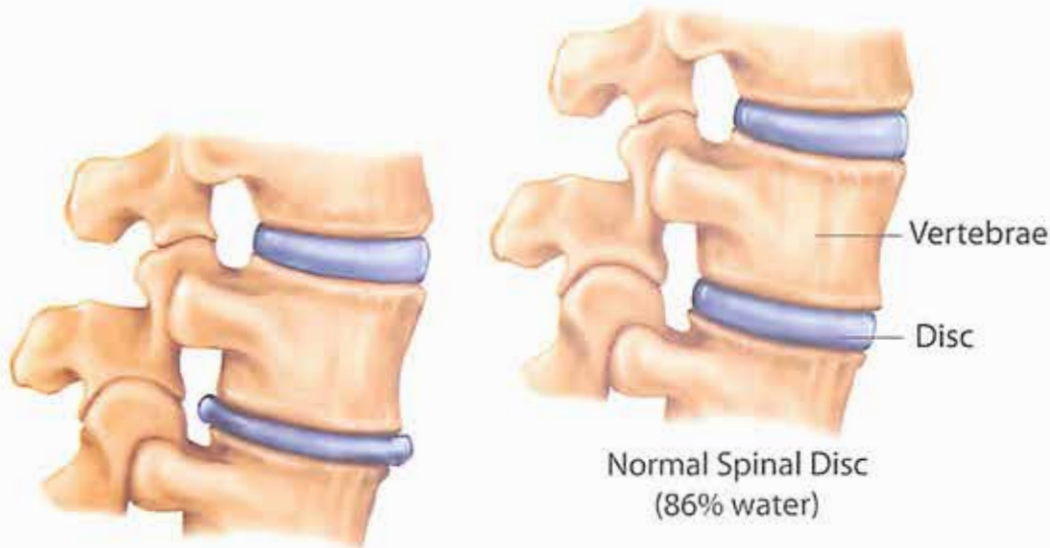


SPINAL DISC DISORDERS



Normal Spinal Disc
(86% water)

STAGE 1:
Bulging Disc



STAGE 3:
Advanced Degeneration



STAGE 2:
Herniated Disc

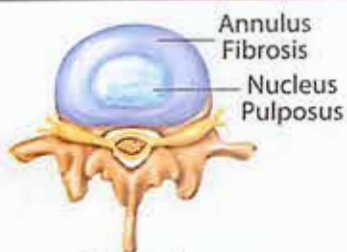
**Pump Mechanism
of Disc Nutrition**
Circulation of water,
oxygen, and nutrients
in and out of the disc



MRI of Normal
Spinal Disc



MRI of Herniated
Spinal Disc



Normal



Annular Tear



Bulging Disc



Herniated Disc

Dr. David Harrison, D.C.

(616) 363-0902 | 2870 E Beltline Ave. NE #9704 | Grand Rapids, MI 49525